

# \$175,000 - 11154 18 Avenue, Edmonton

MLS® #E4455942

**\$175,000**

2 Bedroom, 1.00 Bathroom, 885 sqft  
Condo / Townhouse on 0.00 Acres

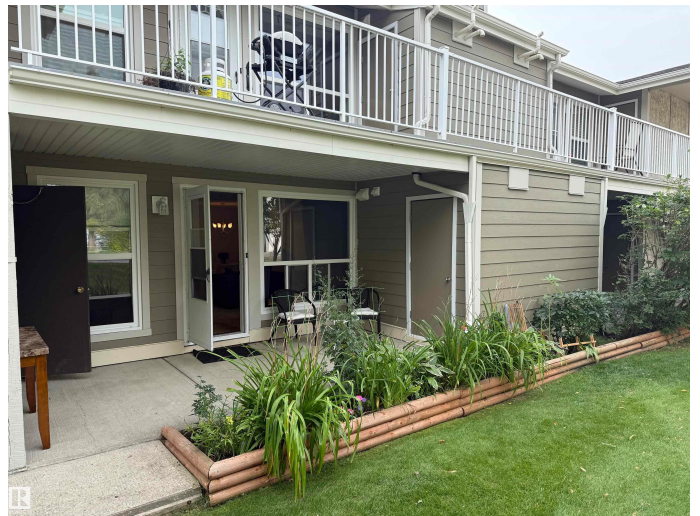
Skyrattler, Edmonton, AB

If you've been looking for a beautifully kept ground floor carriage style condo in the wonderful complex of Pebble Creek, look no further! Facing a picturesque little park and boasting a very well maintained patio / garden area, sits this amazing unit. Features of this 2 bedroom property include such things as a sun-soaked living room / dining area, a bright and open kitchen, insuite laundry, a 4 piece bath, and a dining area. If entertaining is your thing, you will be proud to have people over and enjoying the spacious living room with a wonderful view of the park setting. A room with a view! Situated close to Henday, the airport, shopping, transportation, schools, and Blackmud Creek Ravine,..this one is sure to make your short list.

Built in 1978

## Essential Information

MLS® #	E4455942
Price	\$175,000
Bedrooms	2
Bathrooms	1.00
Full Baths	1
Square Footage	885
Acres	0.00
Year Built	1978



Type	Condo / Townhouse
Sub-Type	Carriage
Style	Bungalow
Status	Active

### **Community Information**

Address	11154 18 Avenue
Area	Edmonton
Subdivision	Skyrattler
City	Edmonton
County	ALBERTA
Province	AB
Postal Code	T6J 4T9

### **Amenities**

Amenities	No Smoking Home, Patio
Parking Spaces	1
Parking	Stall

### **Interior**

Appliances	Dishwasher-Built-In, Dryer, Refrigerator, Stove-Electric, Washer, Window Coverings
Heating	Forced Air-1, Natural Gas
Fireplace	Yes
Fireplaces	Tile Surround
Stories	1
Has Basement	Yes
Basement	None, No Basement

### **Exterior**

Exterior	Wood, Stucco, Vinyl
Exterior Features	Backs Onto Park/Trees, Flat Site, No Through Road, Playground Nearby, Public Transportation, Schools, Shopping Nearby
Roof	Asphalt Shingles
Construction	Wood, Stucco, Vinyl
Foundation	Concrete Perimeter

### **Additional Information**

Date Listed	September 4th, 2025
-------------	---------------------

Days on Market	26
Zoning	Zone 16
Condo Fee	\$252

DATA IS DEEMED RELIABLE BUT IS NOT GUARANTEED ACCURATE BY THE REALTORS® ASSOCIATION OF EDMONTON. COPYRIGHT 2025 BY THE REALTORS® ASSOCIATION OF EDMONTON. ALL RIGHTS RESERVED. Trademarks are owned or controlled by the Canadian Real Estate Association (CREA) and identify real estate professionals who are members of CREA (REALTOR®, REALTORS®) and/or the quality of services they provide (MLS®, Multiple Listing Service®)

Listing information last updated on September 29th, 2025 at 11:17pm MDT