

## \$419,900 - 101 Elm Crescent, Wetaskiwin

MLS® #E4444941

**\$419,900**

5 Bedroom, 2.00 Bathroom, 1,172 sqft

Single Family on 0.00 Acres

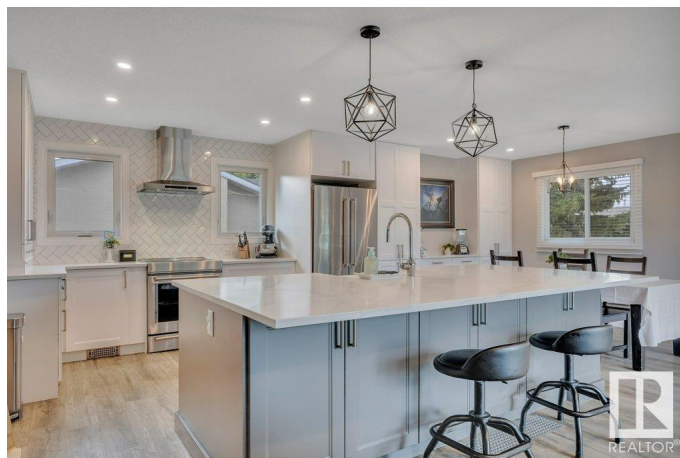
South Centennial, Wetaskiwin, AB

Beautiful Family Home located in the heart of desirable Centennial Subdivision, close to schools & parks! This 5 bedroom, 4-Level Split Home has plenty of room for the whole family, including a newer CUSTOM CHEF™S KITCHEN, beautiful white & grey cabinetry right up to the ceiling, QUARTZ COUNTERTOPS & massive CUSTOM ISLAND with large apron sink & 4 stainless appliances. CENTRAL AIR-CONDITIONING. Vinyl plank flooring through-out, cozy lower family room w/ wood-burning fireplace is a great space for entertaining. Laundry room & sink located on the lower level with tons of storage cabinetry & a work shop. You will love the UNIQUE SUNROOM/BREEZEWAY & huge dbl garage, heated. Backyard is fully fenced with a shed and RV parking.

Built in 1974

### Essential Information

MLS® #	E4444941
Price	\$419,900
Bedrooms	5
Bathrooms	2.00
Full Baths	2
Square Footage	1,172
Acres	0.00
Year Built	1974



Type	Single Family
Sub-Type	Detached Single Family
Style	4 Level Split
Status	Active

### Community Information

Address	101 Elm Crescent
Area	Wetaskiwin
Subdivision	South Centennial
City	Wetaskiwin
County	ALBERTA
Province	AB
Postal Code	T9A 2C7

### Amenities

Amenities	Air Conditioner, Crawl Space, No Animal Home, No Smoking Home, Patio, Vinyl Windows
Parking	Double Garage Attached, Front Drive Access, Heated, Insulated

### Interior

Appliances	Air Conditioning-Central, Dishwasher-Built-In, Dryer, Garage Control, Garage Opener, Oven-Microwave, Refrigerator, Stove-Electric, Washer, Window Coverings
Heating	Forced Air-1, Natural Gas
Fireplace	Yes
Fireplaces	Brick Facing, Mantel
Stories	4
Has Basement	Yes
Basement	Full, Finished

### Exterior

Exterior	Wood, Brick, Vinyl
Exterior Features	Back Lane, Fenced, Golf Nearby, Landscaped, Paved Lane, Schools, Treed Lot
Roof	Asphalt Shingles
Construction	Wood, Brick, Vinyl
Foundation	Concrete Perimeter

### School Information

Elementary	Centennial
------------	------------

Middle	Sacred Heart
High	WCHS

### **Additional Information**

Date Listed	June 27th, 2025
Days on Market	16
Zoning	Zone 80

DATA IS DEEMED RELIABLE BUT IS NOT GUARANTEED ACCURATE BY THE REALTORS® ASSOCIATION OF EDMONTON. COPYRIGHT 2025 BY THE REALTORS® ASSOCIATION OF EDMONTON. ALL RIGHTS RESERVED. Trademarks are owned or controlled by the Canadian Real Estate Association (CREA) and identify real estate professionals who are members of CREA (REALTOR®, REALTORS®) and/or the quality of services they provide (MLS®, Multiple Listing Service®)

Listing information last updated on July 13th, 2025 at 1:02pm MDT