

\$699,000 - 453039 Rge Road 10, Rural Wetaskiwin County

MLS® #E4444392

\$699,000

2 Bedroom, 1.00 Bathroom, 1,455 sqft

Rural on 49.20 Acres

None, Rural Wetaskiwin County, AB

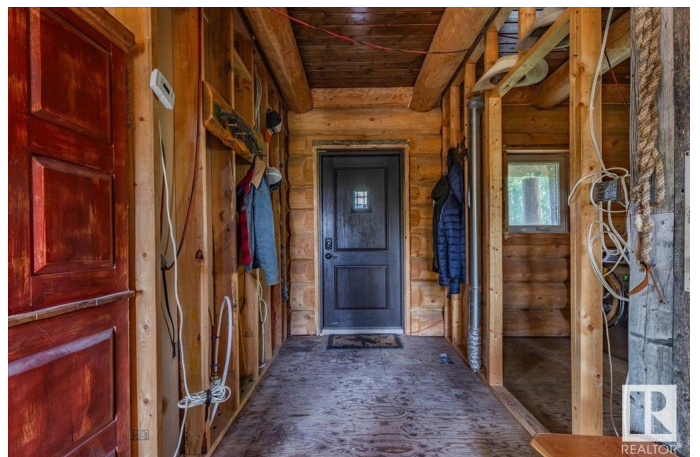
Discover a truly unique opportunity to own 49 acres along the picturesque Battle River and close to Pigeon Lake. This 1454 sq/ft custom home blends rustic charm with modern living, offering 2 bedrooms with the potential to add more. The home boasts vaulted ceilings creating a spacious feel while large decks provide stunning views of the river making it the perfect spot to unwind and connect with nature. The property is a haven for horse lovers, complete with a well-equipped barn, a spacious shop, and 2 stock waterers. It's a paradise for wildlife enthusiasts with frequent sightings of deer and other wildlife right in your backyard. Despite its tranquil and private setting, this sanctuary is conveniently located less than an hour from both Edmonton and Red Deer offering the perfect balance of seclusion and accessibility. With just a few finishing touches needed, this property is ready to be transformed into your dream retreat. Don't miss this rare chance to own a piece of Alberta's natural beauty!

Built in 2013

Essential Information

MLS® # E4444392

Price \$699,000



Bedrooms	2
Bathrooms	1.00
Full Baths	1
Square Footage	1,455
Acres	49.20
Year Built	2013
Type	Rural
Sub-Type	Detached Single Family
Style	2 Storey
Status	Active

Community Information

Address	453039 Rge Road 10
Area	Rural Wetaskiwin County
Subdivision	None
City	Rural Wetaskiwin County
County	ALBERTA
Province	AB
Postal Code	T0C 2V0

Amenities

Features	Deck, Front Porch, Workshop, See Remarks
----------	--

Interior

Heating	Forced Air-1, Propane
Fireplace	Yes
Stories	3
Has Basement	Yes
Basement	Full, Finished

Exterior

Exterior	Log
Exterior Features	Creek, Cross Fenced, Golf Nearby, Private Setting, Ravine View, Rolling Land, Schools, Shopping Nearby, Treed Lot, See Remarks, Partially Fenced
Construction	Log
Foundation	Insulated Concrete Form

Additional Information

Date Listed June 26th, 2025

Days on Market 22

Zoning Zone 90

DATA IS DEEMED RELIABLE BUT IS NOT GUARANTEED ACCURATE BY THE REALTORS® ASSOCIATION OF EDMONTON. COPYRIGHT 2025 BY THE REALTORS® ASSOCIATION OF EDMONTON. ALL RIGHTS RESERVED. Trademarks are owned or controlled by the Canadian Real Estate Association (CREA) and identify real estate professionals who are members of CREA (REALTOR®, REALTORS®) and/or the quality of services they provide (MLS®, Multiple Listing Service®)

Listing information last updated on July 18th, 2025 at 2:02am MDT