

# **\$2,695,000 - 26020 Twp Rd 511 A, Rural Parkland County**

MLS® #E4443453

**\$2,695,000**

4 Bedroom, 3.50 Bathroom, 3,230 sqft

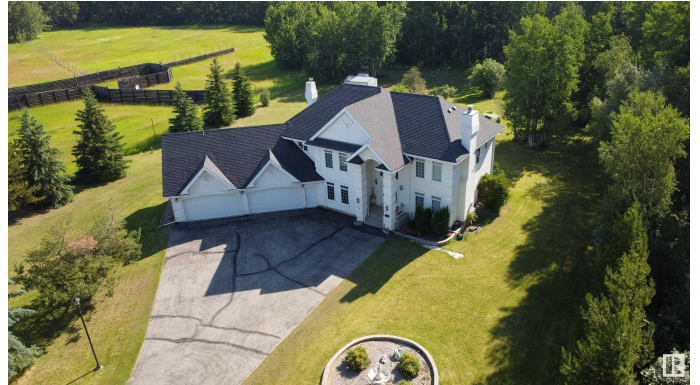
Rural on 48.22 Acres

White Tail Acres, Rural Parkland County, AB

**LOCATION LOCATION LOCATION!!** 48.22 Acres just Minutes from Edmonton. A curved, treelined driveway leads to an elegant custom-built 2-storey home featuring 4 bedrooms, 4 bathrooms, and high-end finishes. The gourmet kitchen with granite countertops flows seamlessly to the formal dining room and grand living room. Relax on the low-maintenance deck or retreat to the serene primary suite. The estate includes an attached 5-car heated garage, a 25'x40' pole barn, and extensive fencing - over \$250,000 invested - ideal for an equestrian center or private venture. Subdivision potential offers future development opportunities making this a smart investment in a prime and growing location. For an unmatched lifestyle, unwind after a busy day with a round of golf just around the corner at the Edmonton Petroleum Golf & Country Club or the Blackhawk Golf Club. Whether seeking a prestigious private residence or future development, this meticulously crafted property is ready to exceed expectations.

Built in 1999

## **Essential Information**



MLS® #	E4443453
Price	\$2,695,000
Bedrooms	4
Bathrooms	3.50
Full Baths	3
Half Baths	1
Square Footage	3,230
Acres	48.22
Year Built	1999
Type	Rural
Sub-Type	Detached Single Family
Style	2 Storey
Status	Active

### Community Information

Address	26020 Twp Rd 511 A
Area	Rural Parkland County
Subdivision	White Tail Acres
City	Rural Parkland County
County	ALBERTA
Province	AB
Postal Code	T7Y 1B2

### Amenities

Features	Closet Organizers, Deck, Fire Pit, Gazebo, No Animal Home, No Smoking Home, Parking-Extra, R.V. Storage, Wet Bar, Natural Gas BBQ Hookup
----------	--

### Interior

Interior Features	ensuite bathroom
Heating	Forced Air-2, Natural Gas
Fireplace	Yes
Stories	3
Has Basement	Yes
Basement	Full, Finished

### Exterior

Exterior	Wood
Exterior Features	Airport Nearby, Cross Fenced, Golf Nearby, Landscaped, Subdividable

	Lot, Partially Fenced
Construction	Wood
Foundation	Concrete Perimeter

### **Additional Information**

Date Listed	June 20th, 2025
Days on Market	57
Zoning	Zone 90

DATA IS DEEMED RELIABLE BUT IS NOT GUARANTEED ACCURATE BY THE REALTORS® ASSOCIATION OF EDMONTON. COPYRIGHT 2025 BY THE REALTORS® ASSOCIATION OF EDMONTON. ALL RIGHTS RESERVED.Trademarks are owned or controlled by the Canadian Real Estate Association (CREA) and identify real estate professionals who are members of CREA (REALTOR®, REALTORS®) and/or the quality of services they provide (MLS®, Multiple Listing Service®)

Listing information last updated on August 16th, 2025 at 1:32am MDT