

\$390,000 - 376 Nelson Drive, Spruce Grove

MLS® #E4440865

\$390,000

3 Bedroom, 2.50 Bathroom, 1,413 sqft

Single Family on 0.00 Acres

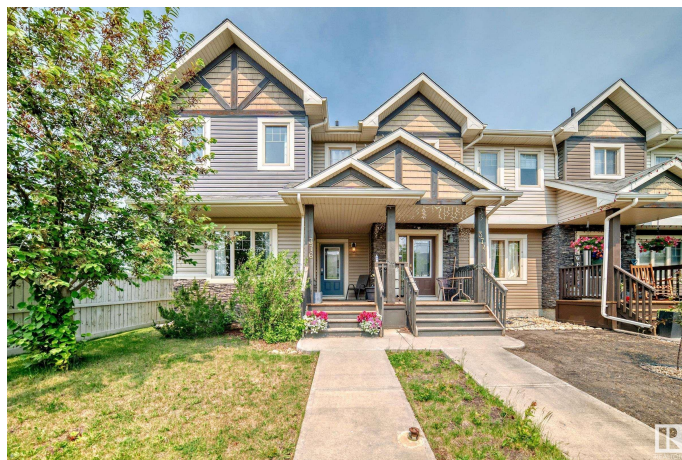
McLaughlin_SPGR, Spruce Grove, AB

Charming 3-Bedroom Home in Desirable McLaughlin Community This air conditioned, well-maintained, 3-bedroom, 2.5-bath home is ideally located in the sought-after McLaughlin neighborhood. Enjoy a low-maintenance lifestyle within walking distance of the Tri Leisure Centre, scenic walking trails, parks, schools, shopping, and restaurants. Inside, you'll find an open-concept main floor featuring a bright living room with large windows and laminate flooring, a spacious kitchen with ample cabinetry, and a central island - perfect for entertaining. A convenient laundry room and 2-piece bath complete the main floor. Upstairs, enjoy three generously sized bedrooms, including a primary suite with his and her closets and a full ensuite. The basement is ready for your personal touch. Outside, the partially fenced and landscaped yard leads to a double detached garage with rear alley access. Clean, move-in ready, and located in a vibrant neighbourhood.

Built in 2012

Essential Information

MLS® #	E4440865
Price	\$390,000
Bedrooms	3
Bathrooms	2.50



Full Baths	2
Half Baths	1
Square Footage	1,413
Acres	0.00
Year Built	2012
Type	Single Family
Sub-Type	Residential Attached
Style	2 Storey
Status	Active

Community Information

Address	376 Nelson Drive
Area	Spruce Grove
Subdivision	McLaughlin_SPGR
City	Spruce Grove
County	ALBERTA
Province	AB
Postal Code	T7X 0N3

Amenities

Amenities	Air Conditioner
Parking	Double Garage Detached

Interior

Interior Features	ensuite bathroom
Appliances	Air Conditioning-Central, Dishwasher-Built-In, Dryer, Garage Control, Garage Opener, Hood Fan, Refrigerator, Stove-Electric, Washer
Heating	Forced Air-1, Natural Gas
Stories	2
Has Basement	Yes
Basement	Full, Unfinished

Exterior

Exterior	Wood, Vinyl
Exterior Features	Playground Nearby, Public Swimming Pool, Public Transportation, Schools, Shopping Nearby, Partially Fenced
Roof	Asphalt Shingles
Construction	Wood, Vinyl
Foundation	Concrete Perimeter

School Information

Elementary	Brookwood School
Middle	Woodhaven Middle School
High	Spruce Grove Composite Hig

Additional Information

Date Listed	June 6th, 2025
Days on Market	41
Zoning	Zone 91

DATA IS DEEMED RELIABLE BUT IS NOT GUARANTEED ACCURATE BY THE REALTORS® ASSOCIATION OF EDMONTON. COPYRIGHT 2025 BY THE REALTORS® ASSOCIATION OF EDMONTON. ALL RIGHTS RESERVED.Trademarks are owned or controlled by the Canadian Real Estate Association (CREA) and identify real estate professionals who are members of CREA (REALTOR®, REALTORS®) and/or the quality of services they provide (MLS®, Multiple Listing Service®)

Listing information last updated on July 17th, 2025 at 7:47am MDT