

\$479,999 - 1310 29 Street, Edmonton

MLS® #E4435893

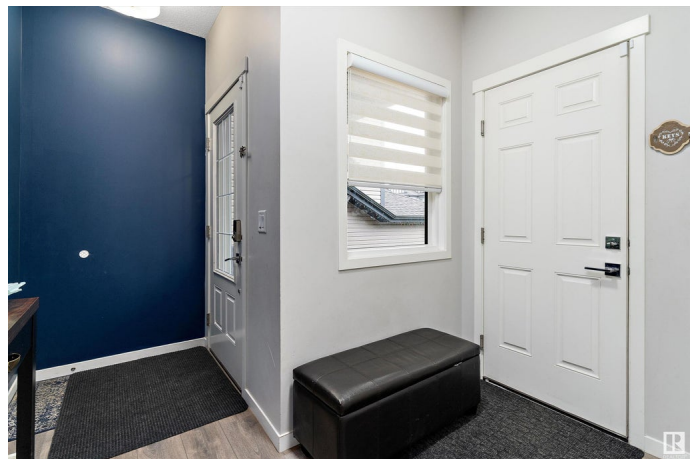
\$479,999

3 Bedroom, 2.50 Bathroom, 1,731 sqft

Single Family on 0.00 Acres

Laurel, Edmonton, AB

Welcome to this beautifully upgraded 2-storey half duplex in the desirable LAUREL community – one of the most sought-after neighbourhoods, perfect for families seeking comfort, style, and convenience. This spacious home offers 3 bedrooms, including a master suite with a walk-in closet and private ensuite. Designed for modern living, it features numerous upgrades like an EXPANDED LIVING AREA, STAIRCASE ENTRANCE, CALIFORNIA CEILING, UPGRADED KITCHEN AID APPLIANCES AND LARGER WINDOWS THAT FILL THE HOME WITH NATURAL LIGHT. The open-concept main floor connects the kitchen, dining, and living spaces - ideal for daily living and entertaining. A double garage provides ample parking and storage, while the private backyard is perfect for outdoor enjoyment. Just a short walk to SVEND HANSEN School and close to parks, trails, and everyday amenities, this home offers quiet residential living with unbeatable convenience. Don't miss this rare opportunity to own in a vibrant, family-friendly community!



Built in 2017

Essential Information

MLS® # E4435893

Price \$479,999

Bedrooms	3
Bathrooms	2.50
Full Baths	2
Half Baths	1
Square Footage	1,731
Acres	0.00
Year Built	2017
Type	Single Family
Sub-Type	Half Duplex
Style	2 Storey
Status	Active

Community Information

Address	1310 29 Street
Area	Edmonton
Subdivision	Laurel
City	Edmonton
County	ALBERTA
Province	AB
Postal Code	T6T 1A9

Amenities

Amenities	Ceiling 9 ft., Deck, Detectors Smoke, Patio
Parking	Double Garage Attached

Interior

Interior Features	ensuite bathroom
Appliances	Dishwasher-Built-In, Dryer, Garage Control, Hood Fan, Refrigerator, Stove-Electric, Washer
Heating	Forced Air-2, Natural Gas
Stories	2
Has Basement	Yes
Basement	Full, Unfinished

Exterior

Exterior	Wood, Stone, Vinyl
Exterior Features	Landscaped, Playground Nearby, Schools, Shopping Nearby
Roof	Asphalt Shingles
Construction	Wood, Stone, Vinyl

Foundation Concrete Perimeter

Additional Information

Date Listed May 12th, 2025

Days on Market 3

Zoning Zone 30

DATA IS DEEMED RELIABLE BUT IS NOT GUARANTEED ACCURATE BY THE REALTORS® ASSOCIATION OF EDMONTON. COPYRIGHT 2025 BY THE REALTORS® ASSOCIATION OF EDMONTON. ALL RIGHTS RESERVED.Trademarks are owned or controlled by the Canadian Real Estate Association (CREA) and identify real estate professionals who are members of CREA (REALTOR®, REALTORS®) and/or the quality of services they provide (MLS®, Multiple Listing Service®)

Listing information last updated on May 15th, 2025 at 1:32pm MDT