

\$160,000 - 306 9816 112 Street, Edmonton

MLS® #E4435555

\$160,000

1 Bedroom, 1.00 Bathroom, 683 sqft

Condo / Townhouse on 0.00 Acres

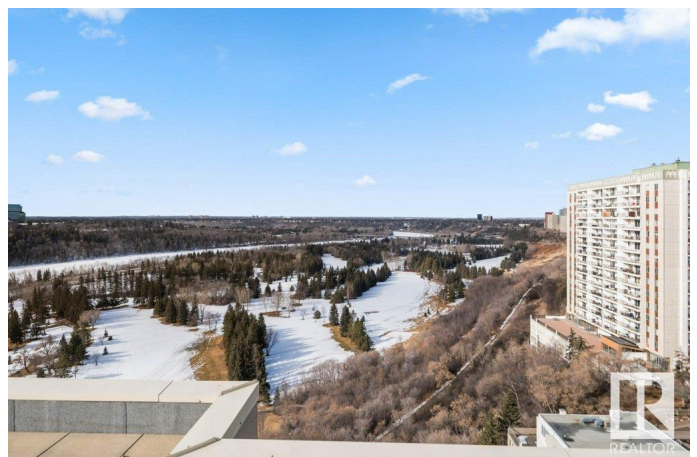
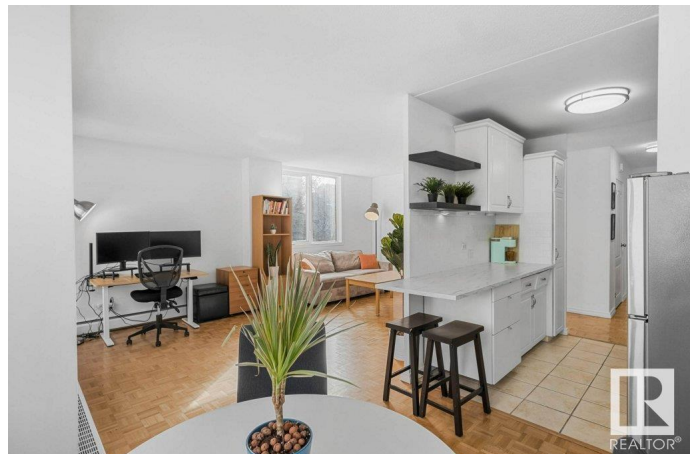
Wåhkwåntåwin, Edmonton, AB

Discover modern living in downtown Edmonton with this 1-bedroom corner unit, offering stunning river valley views. Nestled in a quiet, concrete building, it features lots of windows for ample light and breathtaking sights. The modern kitchen, stylish bathroom, and generous storage space ensure comfort and convenience. Enjoy access to a shared rooftop terrace with panoramic city and valley views, secure covered parking, and proximity to the LRT for easy commuting. This prime location is ideal for experiencing downtown's vibrant lifestyle. A unique opportunity to embrace urban living at its finest.

Built in 1963

Essential Information

| | |
|----------------|------------------------|
| MLS® # | E4435555 |
| Price | \$160,000 |
| Bedrooms | 1 |
| Bathrooms | 1.00 |
| Full Baths | 1 |
| Square Footage | 683 |
| Acres | 0.00 |
| Year Built | 1963 |
| Type | Condo / Townhouse |
| Sub-Type | Apartment High Rise |
| Style | Single Level Apartment |



| | |
|--------|--------|
| Status | Active |
|--------|--------|

Community Information

| | |
|-------------|---------------------|
| Address | 306 9816 112 Street |
| Area | Edmonton |
| Subdivision | W&hkw&nt&win |
| City | Edmonton |
| County | ALBERTA |
| Province | AB |
| Postal Code | T5K 1L5 |

Amenities

| | |
|-----------|---|
| Amenities | Detectors Smoke, No Animal Home, No Smoking Home, Party Room, Secured Parking, Security Door, Storage-In-Suite, Television Connection |
| Parking | Parkade, Stall |

Interior

| | |
|--------------|------------------------------|
| Appliances | Refrigerator, Stove-Electric |
| Heating | Hot Water, Natural Gas |
| # of Stories | 14 |
| Stories | 1 |
| Has Basement | Yes |
| Basement | None, No Basement |

Exterior

| | |
|-------------------|---|
| Exterior | Concrete |
| Exterior Features | Backs Onto Park/Trees, Golf Nearby, Landscaped, Playground Nearby, Public Transportation, Schools, Shopping Nearby, View City |
| Roof | Tar & Gravel |
| Construction | Concrete |
| Foundation | Concrete Perimeter |

Additional Information

| | |
|----------------|---------------|
| Date Listed | May 9th, 2025 |
| Days on Market | 72 |
| Zoning | Zone 12 |
| Condo Fee | \$512 |

DATA IS DEEMED RELIABLE BUT IS NOT GUARANTEED ACCURATE BY THE REALTORS® ASSOCIATION OF EDMONTON. COPYRIGHT 2025 BY THE REALTORS® ASSOCIATION OF EDMONTON. ALL RIGHTS RESERVED. Trademarks are owned or controlled by the Canadian Real Estate Association (CREA) and identify real

estate professionals who are members of CREA (REALTOR®®, REALTORS®®) and/or the quality of services they provide (MLS®®, Multiple Listing Service®®)

Listing information last updated on July 20th, 2025 at 5:32pm MDT