

\$725,000 - 386 52465 Rge Road 213, Rural Strathcona County

MLS® #E4433829

\$725,000

5 Bedroom, 3.50 Bathroom, 1,534 sqft

Rural on 1.36 Acres

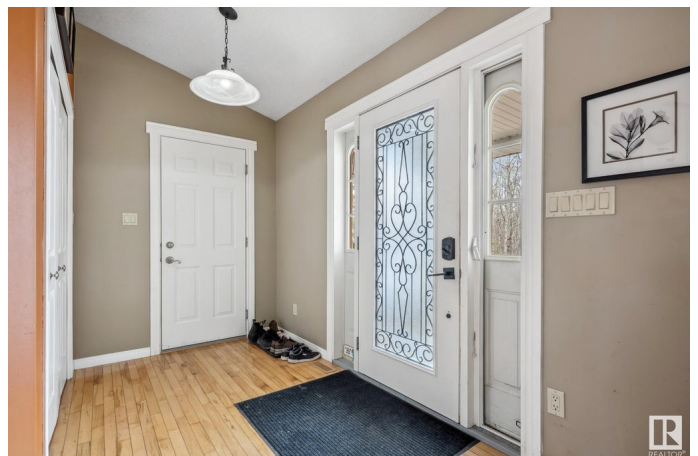
Hude Estates, Rural Strathcona County, AB

Acreage living in desirable Hude Estates! This 1533 sq ft bungalow backs onto an environmental reserve and tranquil pondâ€”no neighbors behind you. Featuring 5 bedrooms and 4 bathrooms, including 2 ensuites, this home is perfect for families. The open floor plan boasts a feature fireplace, spacious kitchen, and access to the back deck overlooking the treed yard. The fully finished basement offers 3 additional bedrooms, 2 bathrooms (1 ensuite), and a large rec area. Home features newer appliances, furnace and air conditioning. Enjoy the peaceful views from your private patio complete with a gazebo & fire pit. Oversized heated double garage with pull-through doors, RV parking, and a 40-ft sea can for extra storage. A rare opportunity to own in a quiet, scenic setting just minutes from amenities!

Built in 2004

Essential Information

MLS® #	E4433829
Price	\$725,000
Bedrooms	5
Bathrooms	3.50
Full Baths	3



Half Baths	1
Square Footage	1,534
Acres	1.36
Year Built	2004
Type	Rural
Sub-Type	Detached Single Family
Style	Bungalow
Status	Active

Community Information

Address	386 52465 Rge Road 213
Area	Rural Strathcona County
Subdivision	Hude Estates
City	Rural Strathcona County
County	ALBERTA
Province	AB
Postal Code	T8G 2E7

Amenities

Features	Air Conditioner, Closet Organizers, Deck, Front Porch, Vaulted Ceiling
----------	--

Interior

Interior Features	ensuite bathroom
Heating	Forced Air-1, Natural Gas
Fireplace	Yes
Stories	2
Has Basement	Yes
Basement	Full, Finished

Exterior

Exterior	Wood
Exterior Features	Backs Onto Park/Trees, Environmental Reserve, Fenced, Private Setting, Stream/Pond, Treed Lot
Construction	Wood
Foundation	Concrete Perimeter

Additional Information

Date Listed	May 1st, 2025
Days on Market	9

Zoning

Zone 80

DATA IS DEEMED RELIABLE BUT IS NOT GUARANTEED ACCURATE BY THE REALTORS® ASSOCIATION OF EDMONTON. COPYRIGHT 2025 BY THE REALTORS® ASSOCIATION OF EDMONTON. ALL RIGHTS RESERVED. Trademarks are owned or controlled by the Canadian Real Estate Association (CREA) and identify real estate professionals who are members of CREA (REALTOR®, REALTORS®) and/or the quality of services they provide (MLS®, Multiple Listing Service®)

Listing information last updated on May 10th, 2025 at 5:02pm MDT