

\$99,000 - 203 10106 105 Street, Edmonton

MLS® #E4432509

\$99,000

1 Bedroom, 1.00 Bathroom, 650 sqft

Condo / Townhouse on 0.00 Acres

Downtown (Edmonton), Edmonton, AB

This contemporary loft-style condo overlooks Jasper Avenue and is just steps away from the LRT, public transit, shops, pubs, and groceriesâ€”everything you need right at your doorstep. Step inside to a spacious entryway with ample room to kick off your shoes and hang your coat. A custom-built wall unit adds both style and convenience with additional storage. The open-concept layout features soaring 9 ft ceilings, durable vinyl plank flooring, a stunning recycled wood feature wall, and an imported antique barn door leading to the bedroomâ€”adding a unique touch of character. The kitchen is clean and well-maintained, complete with an island, stove, fridge, and dishwasherâ€”perfect for cooking and entertaining. Just off the kitchen, youâ€™ll find a full laundry and storage area with a full-size washer and dryer for added convenience. A comfortable 4-piece bathroom completes the space. Keep your vehicle indoors, safe, and secure with the titled indoor parking stall that come with the sale.

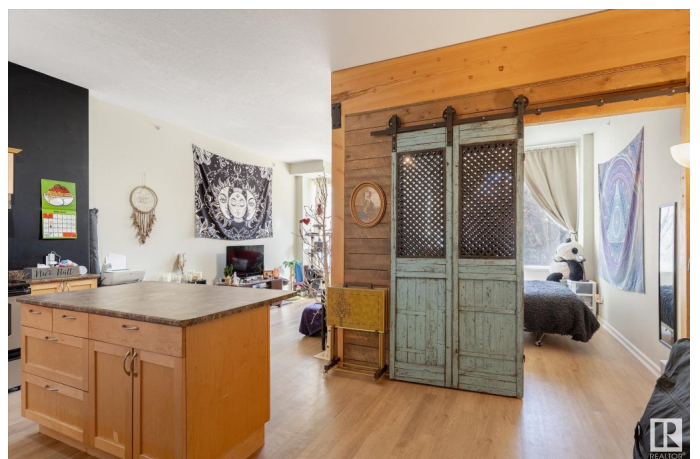
Built in 1973

Essential Information

MLS® # E4432509

Price \$99,000

Bedrooms 1



Bathrooms	1.00
Full Baths	1
Square Footage	650
Acres	0.00
Year Built	1973
Type	Condo / Townhouse
Sub-Type	Apartment High Rise
Style	Loft
Status	Active

Community Information

Address	203 10106 105 Street
Area	Edmonton
Subdivision	Downtown (Edmonton)
City	Edmonton
County	ALBERTA
Province	AB
Postal Code	T5J 2W9

Amenities

Amenities	Ceiling 9 ft., Closet Organizers, Detectors Smoke, Intercom, Low Flw/Dual Flush Toilet, No Smoking Home, Parking-Extra, Secured Parking, Security Door, Security Personnel, Sprinkler System-Fire
Parking Spaces	1
Parking	Heated, Parkade, Single Indoor

Interior

Appliances	Dishwasher - Energy Star, Dryer, Refrigerator-Energy Star, Stove-Electric, Washer
Heating	Baseboard, Natural Gas
# of Stories	11
Stories	1
Has Basement	Yes
Basement	None, No Basement

Exterior

Exterior	Concrete
Exterior Features	Public Transportation, Schools, Shopping Nearby, View City, View Downtown

Roof	SBS Roofing System
Construction	Concrete
Foundation	Concrete Perimeter

Additional Information

Date Listed	April 24th, 2025
Days on Market	16
Zoning	Zone 12
Condo Fee	\$532

DATA IS DEEMED RELIABLE BUT IS NOT GUARANTEED ACCURATE BY THE REALTORS® ASSOCIATION OF EDMONTON. COPYRIGHT 2025 BY THE REALTORS® ASSOCIATION OF EDMONTON. ALL RIGHTS RESERVED.Trademarks are owned or controlled by the Canadian Real Estate Association (CREA) and identify real estate professionals who are members of CREA (REALTOR®, REALTORS®) and/or the quality of services they provide (MLS®, Multiple Listing Service®)

Listing information last updated on May 10th, 2025 at 7:02am MDT