

\$189,900 - 137 7825 71 Street, Edmonton

MLS® #E4421030

\$189,900

1 Bedroom, 1.00 Bathroom, 593 sqft

Condo / Townhouse on 0.00 Acres

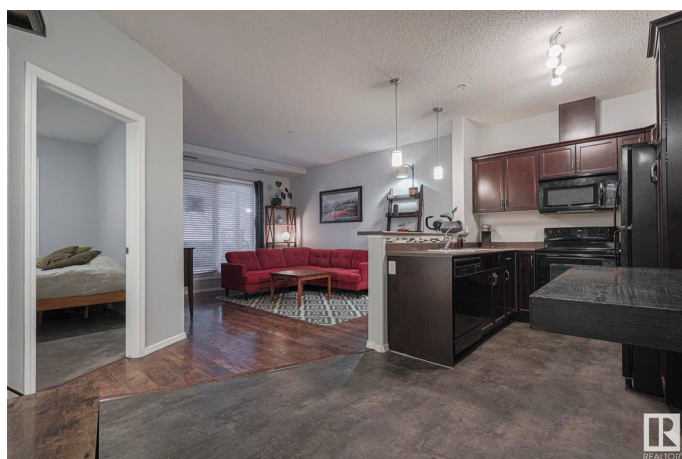
King Edward Park, Edmonton, AB

Welcome to your dream condo! This bright and spacious 1-bedroom, 1-bathroom suite offers the perfect blend of comfort and convenience in a quiet, well-connected area with affordable condo fees. With seamless access to transit, Sherwood Park Freeway, Whyte Ave, and just minutes from Bonnie Doon Mall, this location truly has it all. Step inside to discover a fantastic floor plan with high ceilings, a large bedroom, and a u-shaped kitchen featuring an eat-up breakfast bar—ideal for quick meals or entertaining. In-suite laundry, air conditioning, and one of the largest private decks in the building make everyday living easy and enjoyable. The building itself is packed with top-notch amenities, including two fitness areas, a social room, an expansive party room with a full kitchen, and an indoor pool. Two steam rooms, two saunas, and a large outdoor patio off the pool area add to the year-round enjoyment and relaxation. This is more than just a condo; it's a lifestyle waiting for you to enjoy!

Built in 2010

Essential Information

MLS® #	E4421030
Price	\$189,900
Bedrooms	1



Bathrooms	1.00
Full Baths	1
Square Footage	593
Acres	0.00
Year Built	2010
Type	Condo / Townhouse
Sub-Type	Lowrise Apartment
Style	Single Level Apartment
Status	Active

Community Information

Address	137 7825 71 Street
Area	Edmonton
Subdivision	King Edward Park
City	Edmonton
County	ALBERTA
Province	AB
Postal Code	T6B 3R9

Amenities

Amenities	Air Conditioner, Deck, Exercise Room, Guest Suite, Hot Tub, Parking-Visitor, Party Room, Pool-Indoor, Recreation Room/Centre, Sauna; Swirlpool; Steam, Secured Parking, Security Door, Social Rooms
Parking Spaces	1
Parking	Underground
Has Pool	Yes

Interior

Appliances	Air Conditioning-Central, Dishwasher-Built-In, Dryer, Microwave Hood Fan, Refrigerator, Stove-Electric, Washer
Heating	Baseboard, Natural Gas
# of Stories	4
Stories	1
Has Basement	Yes
Basement	None, No Basement

Exterior

Exterior	Wood, Stucco
Exterior Features	Landscaped, Public Transportation, Schools

Roof	Tar & Gravel
Construction	Wood, Stucco
Foundation	Concrete Perimeter

Additional Information

Date Listed	February 10th, 2025
Days on Market	90
Zoning	Zone 17
Condo Fee	\$398

DATA IS DEEMED RELIABLE BUT IS NOT GUARANTEED ACCURATE BY THE REALTORS® ASSOCIATION OF EDMONTON. COPYRIGHT 2025 BY THE REALTORS® ASSOCIATION OF EDMONTON. ALL RIGHTS RESERVED. Trademarks are owned or controlled by the Canadian Real Estate Association (CREA) and identify real estate professionals who are members of CREA (REALTOR®, REALTORS®) and/or the quality of services they provide (MLS®, Multiple Listing Service®)

Listing information last updated on May 11th, 2025 at 2:47pm MDT