

\$2,800,000 - 49278 Rr 250, Rural Leduc County

MLS® #E4347594

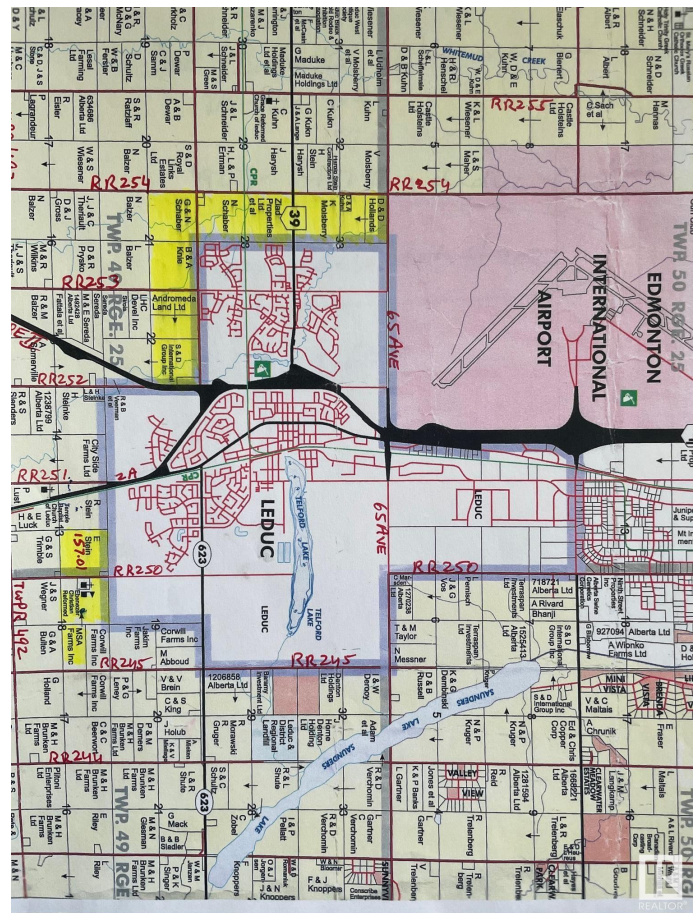
\$2,800,000

0 Bedroom, 0.00 Bathroom,

Rural on 157.01 Acres

None, Rural Leduc County, AB

Once in a lifetime opportunity comes to own a prime piece of land like this; located on south boundary of City of Leduc. 157.01 acres, more or less, located on RR 250 between Rolleyview Road (HWY 623) & TWPR 492, just next to Qualico's MEADOWVIEW (ASP) residential developments in Southeast area of City of Leduc. Excellent parcel of Prime development land for future developments in this part of Leduc. Listed at lower than the market price for prospective investors and developers. Easy access to QEII via TWPR 492 & Hwy 2A and through Rolleyview Roads. Only 10 minutes to Edmonton International Airport.



Essential Information

MLS® #	E4347594
Price	\$2,800,000
Bathrooms	0.00
Acres	157.01
Type	Rural

Community Information

Address	49278 Rr 250
Area	Rural Leduc County
Subdivision	None
City	Rural Leduc County

[illegible]